



STAGE

Dimensions: 6x5m.

Height: 4-5 m

Black curtains: at least two large behind the screen as shown on the map (**very important**). Let us know if you can't achieve the black curtains map

The screen is not centered.

SOUND

- 1 stereo PA system suitable for the venue
- 2 monitors
- Sound desk with a minimum of 4 channels and 2 AUX channels
- 2 DI (direct input)
- 2 effects (Reverb and Pitch)

LIGHTS

- 1 Light desk
- 2 street structures to put the lights 0.5 meters height.
- See attached map for nº&type of lights
- 1 ladder to focus

CONTACT

PRODUCTION:

Maria Gallardo - IKEBANAH ARTES ESCÉNICAS
produccion@ikebanah.es - Tel +34 627615183

VIDEO

Both the screen and the projector will be located on land without need to upload to any bar. The company brings the projector.

Theatre provides VGA cable to control desk and the retro screen with the black curtains (see image below)

SETTING UP

4 hours

DISMANTLING

1,5 hour

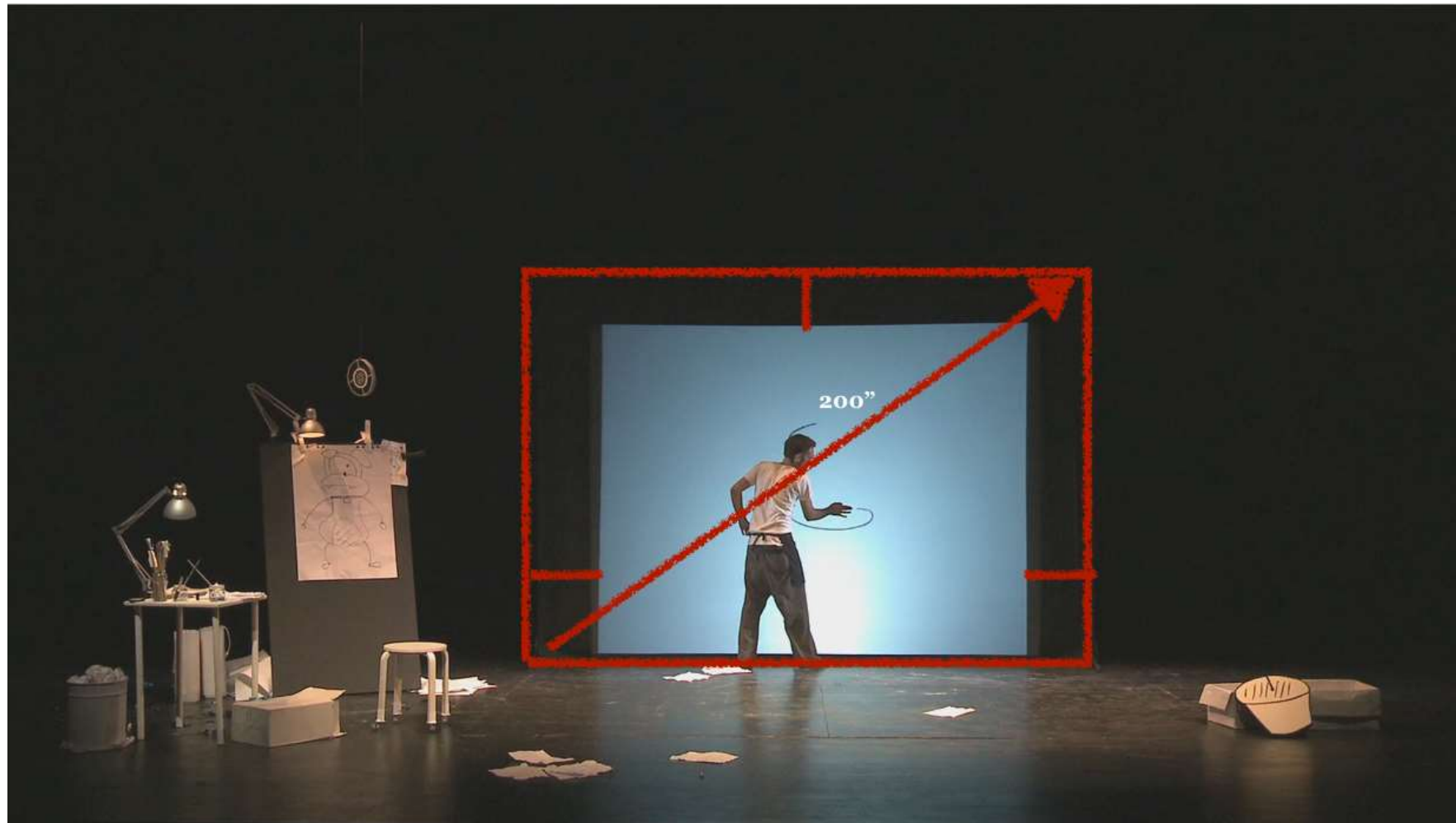
TECHNICAL STAFF

The theatre will provide at least a light&sound technician.

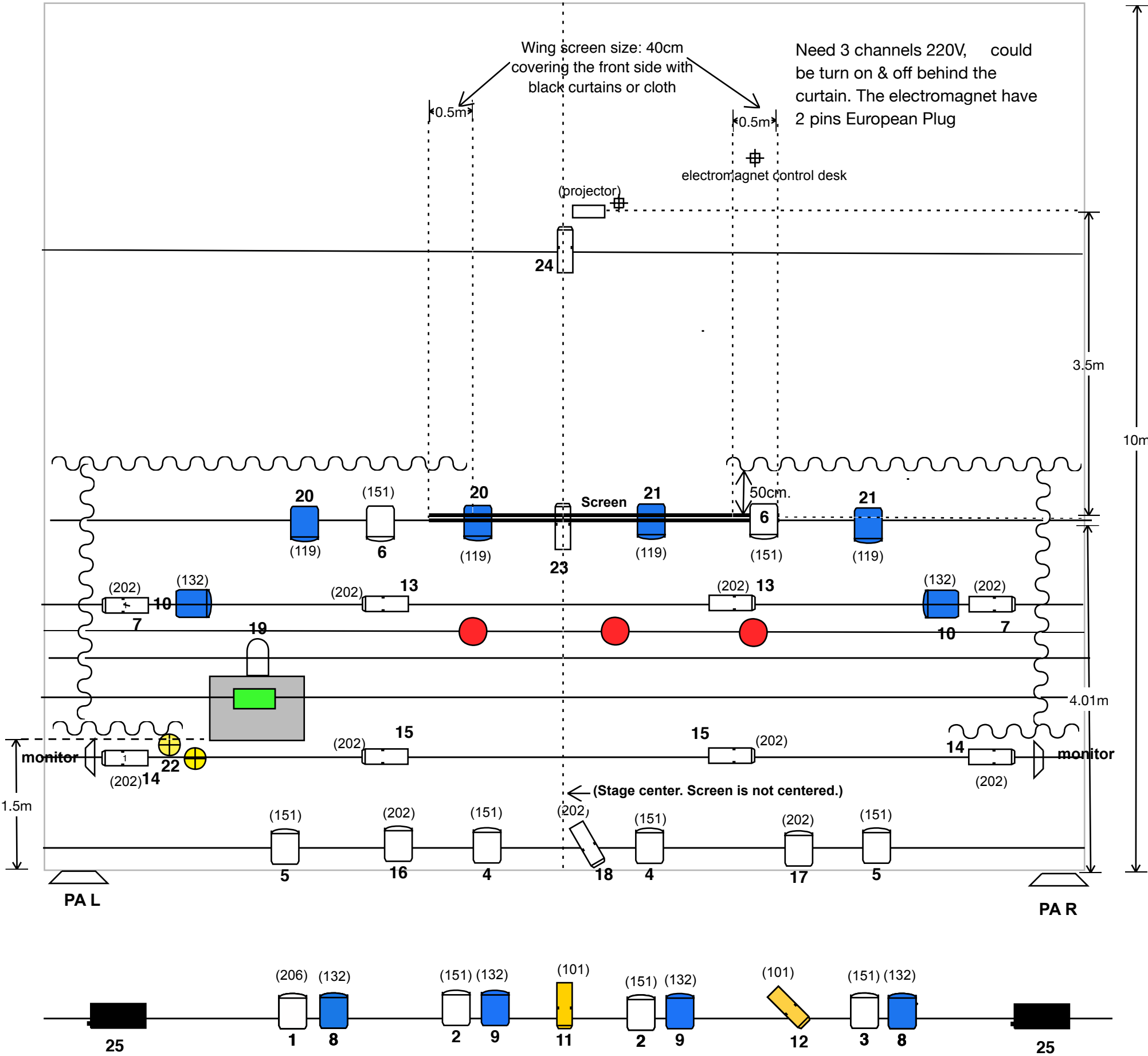
If the theatre has fixed bars should be a minimum of 2 ladders.

DISTRIBUTION:

Ana Sala IKEBANAH ARTES ESCÉNICAS
anasala@ikebanah.es - Tel. 619951791 / 960090504



See how big is the screen and its black wings disposition



Lluís  Spain Barcelona




1,2,7,17... Dimmer Channel

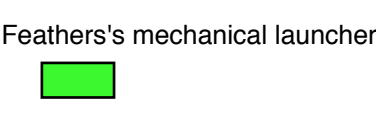
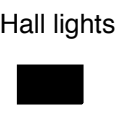
(119) LEEfilter



electromagnet



Dimmer channel on stage  220v plugs female



Company contact: Lluís IDwechat: ferrerpetit
teatreanimal@teatreanimal.net